

# Rittal – The System.

Faster – better – everywhere.

## ▶ TopTherm Blue e Wall-Mounted Cooling Units UL Type 3R



ENCLOSURES

POWER DISTRIBUTION

CLIMATE CONTROL

IT INFRASTRUCTURE

SOFTWARE & SERVICES

FRIEDHELM LOH GROUP



# Blue e. UL Type 3R Listed.

## The climate control solution for enclosures exposed to the great outdoors.

Heat can damage equipment inside an enclosure and lead to system failure. This is why installing a cooling solution from an industry leading supplier is a critical factor in extending a system's life. It's imperative that engineers design the system to take into account temperature build-up and the presence of water.

Rittal's TopTherm, Blue e, Wall-Mounted, UL Listed Type 3R cooling units are an excellent choice for indoor or outdoor enclosures where water is an issue, such as waste water facilities, transportation and toll booths, outdoor kiosks and food and beverage facilities. These American-made cooling units provide protection from the harmful effects on equipment due to the presence of water and external formation of ice. Our use of nanotechnology helps resist filiform corrosion on condenser coils which offers greater energy efficiency. Rittal's coated condenser coils do not affect the cooling capacity of the unit and in most cases a filter is not required. This also enables longer intervals between service maintenance.

Rittal's closed loop system maintains a Type 3R or NEMA 12 rating and creates an environment in the enclosure that is cooler inside than the surrounding temperature. With an internal temperature design point of 95 F, Rittal air conditioners are designed to continually operate at temperatures up to 131 F.

Our TopTherm, Blue e, Wall-Mounted solutions:

- Type 3R for either indoor or outdoor use and provides protection from water, rain, sleet and snow
- Save up to 45% in energy consumption
- Installed as an external or mid-mount unit
- Utilize a Nano-coating on the condenser coil for reduced maintenance time and cost
- Fast filter replacement
- Rittal's Comfort Controller for superior information display
- Functionality and capacity tested before shipment to ensure trouble free operation
- Manufactured in central Ohio and ready for delivery and installation
- UL Listed



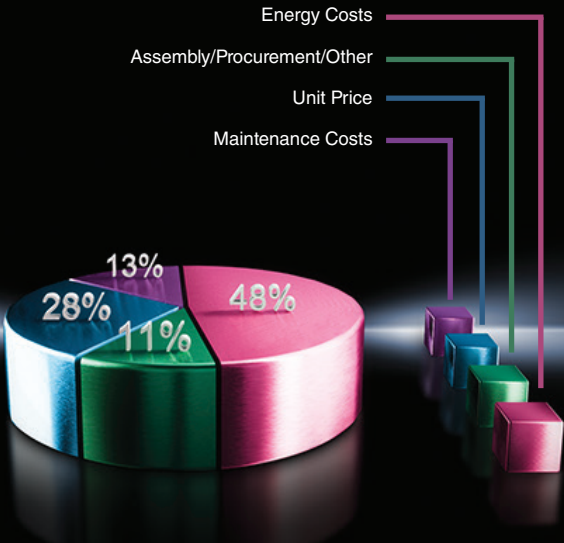


# Cut energy costs with “Blue e”

Energy costs account for almost 50% of the total cost of a cooling unit, making it the area of greatest potential savings. Rittal’s “Blue e” technology can save you up to 45% in energy costs over the life cycle of the cooling unit.

“Blue e” technology can:

- save up to 45% in energy consumption with the same cooling output.
- Eco-mode control: The evaporator coil fan turns off as necessary, depending on the internal temperature of the enclosure.
- with components such as fans and compressors running at their optimum operating point, items in the enclosure and cooling units have a longer service life.



# Top Therm Blue e Wall-Mounted Cooling Units NEMA 3R

## Power Category 1024-1706 BTU (300-500W)

Model No.		Packs of	3302.403	3302.413	3303.503	3303.513
Material	Carbon steel		■	■	■	■
<b>Total cooling output 50 Hz L35 L35 to DIN EN 14511 BTU (kW)</b>			<b>1025 (0.33)</b>	<b>1025 (0.30)</b>	<b>1443 (0.42)</b>	<b>1443 (0.42)</b>
Total cooling output 50/60 Hz L35 L35 BTU (kW)			1025/1093 (0.33/0.37)	1025 (0.30)	1443/1778 (0.42/0.52)	1443 (0.42)
Total cooling output 50/60 Hz L35 L50 BTU (kW)			512/581 (0.15/0.17)	512 (0.15)	957/1082 (0.28/0.32)	957 (0.28)
Rated operating voltage V, ~, Hz			230, 1~, 50/60	115, 1~, 60	230, 1~, 50/60	115, 1~, 60
Height inches (mm)			22 (550)	22 (550)	22 (550)	22 (550)
Width inches (mm)			11 (280)	11 (280)	11 (280)	11 (280)
Depth inches (mm)			8.3 (212)	8.3 (212)	11 (278)	11 (278)
Rated current max. A			1.6/1.7	3.3	2.6/2.6	5.7
Start-up current A			3.0/3.4	8.0	5.1/6.4	11.5
Pre-fuse A			10	10	10	10
Motor circuit-breaker A			–	–	–	–
Rated power P <sub>el</sub> 50/60 Hz L35 L35 kW			0.30/0.31	0.34	0.43/0.45	0.55
Rated power P <sub>el</sub> 50/60 Hz L35 L50 kW			0.34/0.34	0.41	0.50/0.56	0.67
Operating temperature range			+50°F...+122°F	+50°F...+122°F	+50°F...+122°F	+50°F...+122°F
Temperature control	Basic controller		■	■	–	–
	e-Comfort controller		–	–	■	■
Setting range			+68°F...+131°F	+68°F...+131°F	+68°F...+131°F	+68°F...+131°F
Energy efficiency ratio (EER) 50 Hz L35 L35 to DIN EN 14511			1.1	1.1	1.0	1.0
Refrigerant oz (g)			R134a, 3.5 (100)	R134a, 3.5 (100)	R134a, 6.0 (170)	R134a, 6.0 (170)
Permissible operating pressure (p. max.) psi (bar)			406 (28)	406 (28)	406 (28)	406 (28)
Air throughput of fans (unimpeded air flow), internal circuit/external circuit cfm (m³/h)			182/203 (310/345)	182/203 (310/345)	203/182 (345/310)	203/182 (345/310)
Weight lb (kg)			28.5 (13)	28.5 (13)	42 (19)	42 (19)

### Accessories

Condensate Hose	1 pc(s).	3301.610	3301.610	3301.610	3301.610
Door-Operated Switch	1 pc(s).	4127.010	4127.010	4127.010	4127.010
Metal Filters	1 pc(s).	3286.310	3286.310	3286.310	3286.310
Digital Enclosure Internal Temperature Display and Thermostat	1 pc(s).	3114.200	3114.200	–	–
Master/Slave Cable for SK-BUS System	1 pc(s).	–	–	3124.100	3124.100
Interface Board for Units with e-Comfort Controller	1 pc(s).	–	–	3124.200	3124.200

Metric measurements are exact, imperial measurements are rounded

# Top Therm Blue e Wall-Mounted Cooling Unit, NEMA 3R

## Power Category 3412-5118 BTU (1000-1500W)

Model No.		Packs of	3304.503	3304.513	3305.503	3305.513
Material	Carbon steel		■	■	■	■
<b>Total cooling output 50 Hz L35 L35 to DIN EN 14511 BTU (kW)</b>			<b>3415 (1.00)</b>	<b>3415 (1.00)</b>	<b>4170 (1.22)</b>	<b>4170 (1.22)</b>
Total cooling output 50/60 Hz L35 L35 BTU (kW)			3415/3620 (1.00/1.06)	3415/3620 (1.00/1.06)	4170/4204 (1.22/1.23)	4170/4204 (1.22/1.23)
Total cooling output 50/60 Hz L35 L50 BTU (kW)			2698/2869 (0.79/0.84)	2698/2869 (0.79/0.84)	2638/2873 (0.77/0.84)	2638/2873 (0.77/0.84)
Rated operating voltage V, ~, Hz			230, 1~, 50/60	115, 1~, 60	230, 1~, 50/60	115, 1~, 60
Height inches (mm)			37 (950)	37 (950)	37 (950)	37 (950)
Width inches (mm)			16 (400)	16 (400)	16 (400)	16 (400)
Depth inches (mm)			13 (324)	13 (324)	13 (324)	13 (324)
Rated current max. A			4.8/4.4	9.5/10.0	5.4/6.0	11.0/12.5
Start-up current A			12/14	26/28	22/24	42/46
Pre-fuse A			10	16	16	20
Motor circuit-breaker A			–	–	–	–
Rated power P <sub>el</sub> 50/60 Hz L35 L35 kW			0.69/0.80	0.72/0.83	1.00/1.08	1.03/1.13
Rated power P <sub>el</sub> 50/60 Hz L35 L50 kW			0.81/0.93	0.84/0.97	1.12/1.21	1.16/1.25
Operating temperature range			+50°F...+122°F	+50°F...+122°F	+50°F...+122°F	+50°F...+122°F
Temperature control	Basic controller		–	–	–	–
	e-Comfort controller		■	■	■	■
Setting range			+68°F...+131°F	+68°F...+131°F	+68°F...+131°F	+68°F...+131°F
Energy efficiency ratio (EER) 50 Hz L35 L35 to DIN EN 14511			1.4	1.4	1.2	1.2
Refrigerant oz (g)			R134a, 11.5 (325)	R134a, 11.5 (325)	R134a, 17.6 (500)	R134a, 17.6 (500)
Permissible operating pressure (p. max.) psi (bar)			406 (28)	406 (28)	406 (28)	406 (28)
Air throughput of fans (unimpeded air flow), internal circuit/external circuit cfm (m³/h)			353/530 (600/900)	353/530 (600/900)	353/530 (600/900)	353/530 (600/900)
Weight lb (kg)			86 (39)	97 (44)	90 (41)	101 (46)

### Accessories

Air Diverter	1 pc(s).	3213.310	3213.310	3213.310	3213.310
Condensate Hose	1 pc(s).	3301.610	3301.610	3301.610	3301.610
Door-Operated Switch	1 pc(s).	4127.010	4127.010	4127.010	4127.010
Metal Filters	1 pc(s).	3286.310	3286.310	3286.310	3286.310
Digital Enclosure Internal Temperature Display and Thermostat	1 pc(s).	3114.200	3114.200	–	–
Master/Slave Cable for SK-BUS System	1 pc(s).	–	–	3124.100	3124.100
Interface Board for Units with e-Comfort Controller	1 pc(s).	–	–	3124.200	3124.200

Metric measurements are exact, imperial measurements are rounded

# Top Therm Blue e Wall-Mounted Cooling Units UL Type 3R

Power Category 6824-7506 BTU (2000-2200W)

Model No.		Packs of	3328.503	3328.513	3329.503	3329.513
Material	Carbon steel		■	■	■	■
<b>Total cooling output 50 Hz L35 L35 to DIN EN 14511 BTU (kW)</b>			<b>6125 (1.80)</b>	<b>6125 (1.80)</b>	<b>7725 (2.3)</b>	<b>7725 (2.3)</b>
Total cooling output 50/60 Hz L35 L35 BTU (kW)			6125/6480 (1.80/1.90)	6125/6480 (1.80/1.90)	7724/8076 (2.26/2.36)	7724/8076 (2.26/2.36)
Total cooling output 50/60 Hz L35 L50 BTU (kW)			4490/4808 (1.32/1.41)	4490/4808 (1.32/1.41)	5281/5627 (1.54/1.64)	5281/5627 (1.54/1.64)
Rated operating voltage V, ~, Hz			230, 1~, 50/60	115, 1~, 60	230, 1~, 50/60	115, 1~, 60
Height inches (mm)			62 (1580)	62 (1580)	62 (1580)	62 (1580)
Width inches (mm)			16 (400)	16 (400)	16 (400)	16 (400)
Depth inches (mm)			14 (359)	14 (359)	12 (295)	12 (295)
Rated current max. A			7.5/9.1	14.7/17.3	8.6/10.6	17/22
Start-up current A			22/26	36/39	21/21	44/42
Pre-fuse A			16	25	16	25
Motor circuit-breaker A			–	–	–	6.3... 10
Rated power P <sub>el</sub> 50/60 Hz L35 L35 kW			0.99/1.09	1.05/1.144	1.31/1.495	1.36/1.54
Rated power P <sub>el</sub> 50/60 Hz L35 L50 kW			1.51/1.29	1.20/1.35	1.54/1.76	0.67
Operating temperature range			+50°F...+122°F	+50°F...+122°F	+50°F...+122°F	+50°F...+122°F
Temperature control	Basic controller		–	–	–	–
	e-Comfort controller		■	■	■	■
Setting range			+68°F...+131°F	+68°F...+131°F	+68°F...+131°F	+68°F...+131°F
Energy efficiency ratio (EER) 50 Hz L35 L35 to DIN EN 14511			1.6	1.6	1.6	1.6
Refrigerant oz (g)			R134a, 31.7 (900)	R134a, 31.7 (900)	R134a, 31.7 (900)	R134a, 31.7 (900)
Permissible operating pressure (p. max.) psi (bar)			406 (28)	406 (28)	406 (28)	406 (28)
Air throughput of fans (unimpeded air flow), internal circuit/external circuit cfm (m <sup>3</sup> /h)			324/377 (550/640)	324/377 (550/640)	377/418 (640/710)	377/418 (640/710)
Weight lb (kg)			145 (66)	161 (73)	152.1 (69.0)	167.6 (76.0)

## Accessories

Air Diverter	1 pc.	3213.310	3213.310	3213.310	3213.310
Condensate Hose	1 pc.	3301.610	3301.610	3301.610	3301.610
Door-Operated Switch	1 pc.	4127.010	4127.010	4127.010	4127.010
Metal Filters	1 pc.	3286.310	3286.310	3286.310	3286.310
Master/Slave Cable for SK-BUS System	1 pc.	–	–	3124.100	3124.100
Interface Board for Units with e-Comfort Controller	1 pc.	–	–	3124.200	3124.200

Metric measurements are exact, imperial measurements are rounded

# Rittal Offers a Complete Line of 3R Products.

## Baying System TS 8

**Material and surface finish:**

- Enclosure frame: Carbon steel, 2 mm, dipcoat-primed and powder-coated
- Roof: Carbon steel, 1.5 mm, dipcoat-primed, powdercoated on the outside, textured paint
- Door: Carbon steel, 2 mm, dipcoat-primed, powder-coated on the outside, textured paint
- Rear wall: Carbon steel, 1.5 mm, dipcoat-primed, powder-coated on the outside, textured paint
- Base plates: Carbon steel, 1.5 mm, zinc-plated
- Mounting plate: Carbon steel, 3 mm, zinc-plated

**Color:**

- RAL 7035

**Protection category:**

- UL/cUL Type 1, 12, 3R

**Supply includes:**

- Enclosure frame with door(s)
- Roof plate
- Base plates
- Rear wall
- Mounting plate
- 4 transportation eyebolts
- Lock: 3 mm double-bit

Model No	H	W	D	Wt
8606.548	79	24	24	229
8806.548	79	32	24	288
8006.548	79	39	24	355
8828.548	87	32	32	320

*Dimensions in inches  
Weight in lbs.*



## Wall-Mounted Housing WM

**Material and surface finish:**

- Housing: Carbon steel
- Door: Carbon steel, all-round foamed-in PU seal
- Mounting plate: Carbon steel

**Color:**

- RAL 7035

**Protection category IP to IEC 60 529:**

- IP 66

**Protection category NEMA:**

- NEMA 12, 3R, 4

**Supply includes:**

- Housing with hinged door(s), of all-round solid construction, door catch on the left on single-door housing
- Universal disconnect cutout
- Holes for wall mounting
- Mounting plate
- 2 or 3-point latching L-handle

Model No	H	W	D	Wt
8017.548	24	26	8	59
8017.568	35	32	10	132
8017.580	35	32	12	139
8017.585	41	32	12	163

*Dimensions in inches  
Weight in lbs.*



## TopTherm Filter Fans

**Color:**

- RAL 7035

**Supply includes:**

- Complete unit ready to install, including filter mat

**Note:**

- NEMA 12, 3R, 4

**Supply includes:**

- For energy-efficient operation of the filter fans, we recommend using the enclosure internal thermostat, the speed control or the digital enclosure internal temperature display and thermostat

Model No	CFM* (50/60 Hz)
3237.100	12/15
3237.110	12/15
3237.124	12
3238.100	32/39
3238.110	32/39
3238.124	32

*\*Throughput is unimpeded*



*Fan Rated 3R when combined with appropriate hood*

## Hose-Proof Hood

**for a higher protection category**

- RAL 7035

**Material:**

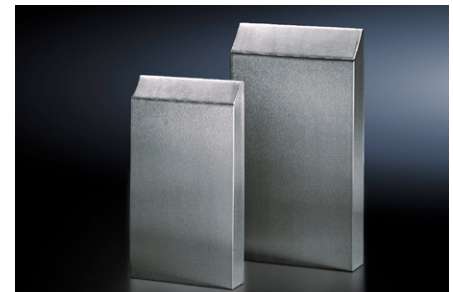
- carbon steel

**Protection category NEMA:**

- NEMA Type 1, 12, 3R

Model No	H	W	D
3237.085	9	6	2
3238.085	10	7	2
3239.085	13	9	2
3240.085	15	11	3

*Dimensions in inches*



\*Refer to [www.Rittal.us](http://www.Rittal.us) for complete product line and technical specifications.



# Rittal – The System.

**Faster – better – everywhere.**

- Enclosures
- Power Distribution
- Climate Control
- IT Infrastructure
- Software & Services

## **Rittal Corporation**

Woodfield Corporate Center • 425 N. Martingale Road, Suite 400 • Schaumburg, IL • USA  
1 Rittal Place • Urbana Ohio 43078 • USA  
Phone: 937-399-0500 • Fax: 800-477-4003 • Toll-free: 800-477-4000  
Email: [rittal@rittal.us](mailto:rittal@rittal.us) • Online: [www.rittal.us](http://www.rittal.us)

ENCLOSURES

POWER DISTRIBUTION

CLIMATE CONTROL

IT INFRASTRUCTURE

SOFTWARE & SERVICES

FRIEDHELM LOH GROUP

