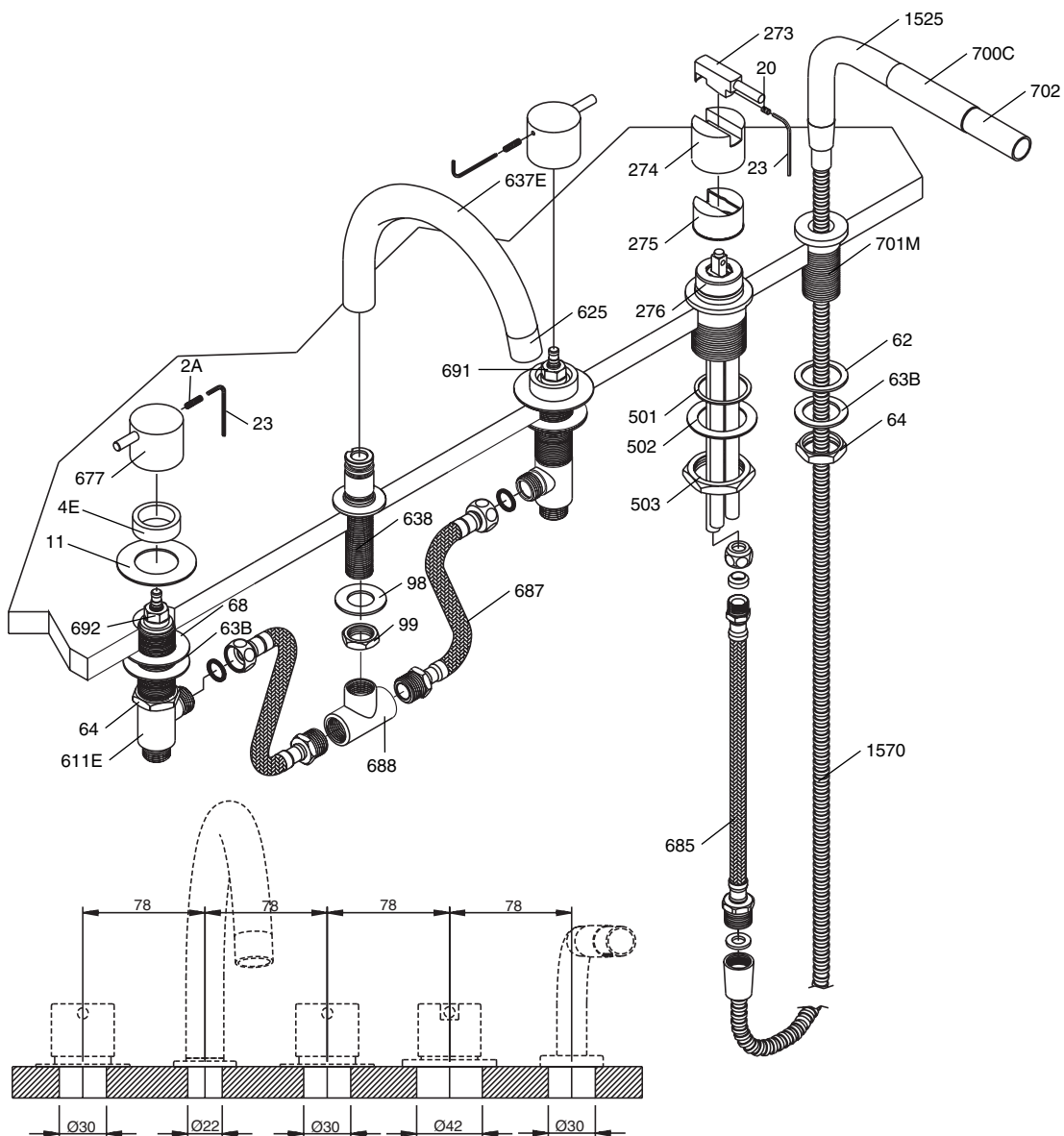


Monteringsvejledning Vola SC13 Montageanleitung Vola SC13 Mounting instruction Vola SC13



- AUSTRALIA**
dedece
263 Liverpool Street
Darlinghurst
NSW 2010 Sydney
Tel: 01525 84 11 55
Fax: 2 9360 2722
dedece@dedece.com
www.dedece.com
- BELGIË**
Vola bvba
Valkenburgerstraat 23
1011 MG Amsterdam
Tel.: 3 440 46 19
Fax: 3 448 22 04
sales@vola.be
www.vola.be
- CANADA**
Ginger's Bath
80 Ronald Avenue
Toronto, Ontario
M6E 5A2
Tel: 416-787-1787
Fax: 416-787-1748
gingers@gingersbath.com
www.elite.com
- DANMARK**
Vola A/S
Lunavej 2
8700 Horsens
Tel: 70 23 55 00
Fax: 70 23 55 11
sales@vola.dk
www.vola.dk
- DEUTSCHLAND**
Vola GmbH
Schwanthaler Straße 75A
80336 München
Tel: 089 59959-0
Fax: 089 59959-90
vola@vola.de
www.vola.de
- EIRE**
Shires
Bromhill Road, Tallaght
Dublin 24
Tel: 1 4047 600
shiresireland@quaiceram-shires.com
- ESPAÑA**
ART-QUITEC
c/ Comercio, 31
08003 Barcelona
Tel: (93) 844.40.70
Fax: (93) 844.40.71
artquitect@artquitect.net
- ESTONIA**
Hais Interiors OÜ
12000 Tallinn
Tel: 271 5114 10
Fax: 271 5114 11
hais@hais.ee
www.hais.ee
- FRANCE**
sopha industries
44, rue Blanche
75009 Paris
Tel: 75295661
Fax: 7627190
info@haisfrance.fr
sopha@sopha.fr
www.sopha.fr
- GREAT BRITAIN**
Vola UK Ltd.
Unit 12, Amphihill Business Park
Station Road, Amphihill
Bedfordshire MK45 2QW
Tel: 01525 84 11 55
Fax: 01525 84 11 77
sales@vola.co.uk
www.vola.co.uk
- HONG KONG**
moda bagno s.a.
50 Anapatscos Street
Villissia 15 235, Athens
Tel: 10 80 36 700
Fax: 10 80 49 408/
10 80 46 987
www.modabagno.gr
- ISLAND**
Tengi ehf.
Smidjuvegur 11
200 Kópavogur
Tel: 564-1088
Fax: 564-1089
www.tengi.is
- ISRAEL**
Super Ceramic
23 Baruch Hersh St.
Bney Brak 51201
Tel: 3 9394640
Fax: 3 9341489
import@figli.co.il
- ITALIA**
RAPSEL Spa
Via Volta, 13
20019 Settimo Milanese (MI)
Tel: 02 33501306
Fax: 02 33501306
rapse@rapse.it
www.rapse.it
- KOREA**
E.L. System Co. Ltd.
2F Inwha B/D 97-17
Nonhyun-dong, Kangnam-gu
Seoul
Tel: 3445-3781
Fax: 3445-3784
- KYPRIAKI DIMOKRATI / KIBRIS CUMHURİYETİ**
S.C. Nicolaidis Ltd.
Gregorou Karakia 3, Strovolos
1512 Nicosia
Tel: 22 312 141
Tel: 22 424 803
cn@olkia.com.cy
- LATVIA**
Hais Trading Ltd.
Antenas str. 3
1004, Rīga
Tel: 76295661
Fax: 7627190
info@haisfrance.fr
www.hais.ee
- LEBANON**
Geachan Group
Hayek Roundabout, Sin El Fil
Beirut - Lebanon
Tel: 1 480520/1/2 - 489151/2
Fax: 1 496607
geachan@inco.com.lb
www.geachangroup.com
- MEXICO**
Productos de Laton
de Alta Calidad S.A. de C.V.
Explanada 710
Mexico DF, 11000
tel 01 800 2253946
fax (55)55402890
mail: placesdecv@hotmail.com
www.gzdilisi.biz/vola/vola.html
- NETHERLAND**
Vola Sanitair BV
Valkenburgerstraat 23
1011 MG Amsterdam
Tel: (0) 20 36 56 356
Fax: (0) 20 36 56 482
info.nl@vola.com
www.vola.com
- NEW ZEALAND**
Metrix Group
211 Wairau Rd.
Takapuna, Auckland
Tel: 09-443 1333
Fax: 09-443 1340
metrix@metrix.co.nz
- NIPPON**
Cera Trading Co., c/o Toto Ltd.
TOTO Nogizaka Bldg.
1-24-3 Minami Aoyama
Minato-ku
Tokyo 107-0062
Tel: 03-3796-6151
Fax: 03-3402-7185
www.cera.co.jp
- FLUJ DESIGN CORPORATION**
3-15-14 Higashi-Hekikuro
Toshima-Ku
Tokyo 170-0013
Tel: 03-3983-2251
Fax: 03-3988-8320
info@fujid.com
www.fujid.com
- NORGE**
shelby teknikk as
Strandgaten 55
4370 Egersund
Tel: 51 46 18 00
Fax: 51 46 18 01
post@shelby.no
www.shelbyrn
- ÖSTERREICH**
Vola Vertriebs-GmbH
Am Wasser 4
8430 Leibnitz
Tel: 3452 71434
Fax: 3452 71390
vola@vola.at
www.vola.at
- POLSKA**
Vola Decorum
Ul. Promienada 1/3
00-778 Warszawa
Tel: 22 840 30 65
Fax: 22 840 26 13
vola@decorum.pl
- PORTUGAL**
CARVALHO BATISTA & Ca, Sa.
Rua do Almada
79-88 - Apartado 4784
4013-001 Porto
Tel: 22 339 21 26 / 7 / 9
Fax: 22 205 96 11
carvalhoabatista@mail.telepac.pt
www.carvalhoabatista.pt
- SCHWEIZ**
Vola AG
Müllstr. 18
8320 Fehrlorff
Tel: 01 / 955 18 18
Fax: 01 / 955 18 19
sales@vola.ch
www.vola.ch
- SINGAPORE**
Wlan Tai & Co. (Pte.) Ltd.
25 Changi South Avenue 2
SINGAPORE 466630
Tel: +65 6546 5900
Fax: +65 6546 6388
info@wantai.com
www.bathroomgallery.com.sg
- SLOVENIJA**
MODERNA d.o.o.
Ivonačjevo nas. 5,
9000 Murska Sobota
tel./faks: 6 2 532 1967
Periceva 31
1000 Ljubljana
Tel. 6 1 236 21 83
Faks: 6 1 236 21 84
moderna@siol.net
- SUOMI**
INNO-TUOTE OY
Main office and production
TAHDENLENNONTIE 9
02240 ESPOO
Tel. (0) 9 8870 380
Fax. (0) 9 8870 3833
info@innointerior.fi
www.innointerior.com
- SVERIGE**
Dansani Sweden AB
Ulmarksvägen 9
802 91 Gävle
Tel: 026 141421
Fax: 026 141427
dansani@dansani.se
www.dansani.se
- TAIWAN**
Balden Company
4, Lane 42,
Chung Shan North Road Sec. 2
Taipei
Tel: (02) 2541-7063
Fax: (02) 2523-3628
balde@ms22.hinet.net
- UNITED STATES**
Hastings Tile and Bath Collection
30 Commercial Street
Freeport, NY 11520
Tel: 516-379-3500
Tel: 800-351-0038
Fax: 516-223-8495
vola@hastings30.com
www.hastings30.com



1 x Vola S50D
(Ø = 28 mm)

1 x Vola S50DH
(Ø = 28 mm)

1 x Vola T1M200
(Ø = 28 mm)

1 x Vola 500
(Ø = 40 mm)

1 x Vola 090E/C
(Ø = 21 mm. Max 35 mm)